

[illegible]

INDIGO POMPAÑO BEACH
POMPAÑO BEACH, FL
ATLANTIC RESIDENTIAL



BEATRIZ M. HERNANDEZ
AR0094576

COPYRIGHT 2023 BIZI-ARQ. INC.
THE ARCHITECTURAL DESIGN AND DETAIL DRAWINGS
FOR THIS BUILDING AND/OR OVERALL PROJECT ARE
THE LEGAL PROPERTY OF AND ALL RIGHTS ARE
RESERVED BY THE ARCHITECT. THE USE FOR
REPRODUCTION, CONSTRUCTION, OR DISTRIBUTION IS
PROHIBITED UNLESS AUTHORIZED BY THE ARCHITECT.
THEIR USE FOR REPRODUCTION, CONSTRUCTION, OR
DISTRIBUTION IS PROHIBITED UNLESS AUTHORIZED IN
WRITING BY THE ARCHITECT.

ARCHITECT'S BUILDING CODE
TO THE BEST OF THE ARCHITECT'S KNOWLEDGE, THE
PLANS AND SPECIFICATIONS COMPLY WITH FLORIDA
BUILDING CODE SEVENTH EDITION (2020) AND THE
APPLICABLE FIRE-SAFETY STANDARDS AS
DETERMINED BY THE LOCAL AUTHORITY AND CHAPTER
333, FLORIDA STATUTES.

PROJECT NO. 23-1006

SCALE As indicated

DATE 2023.08.12

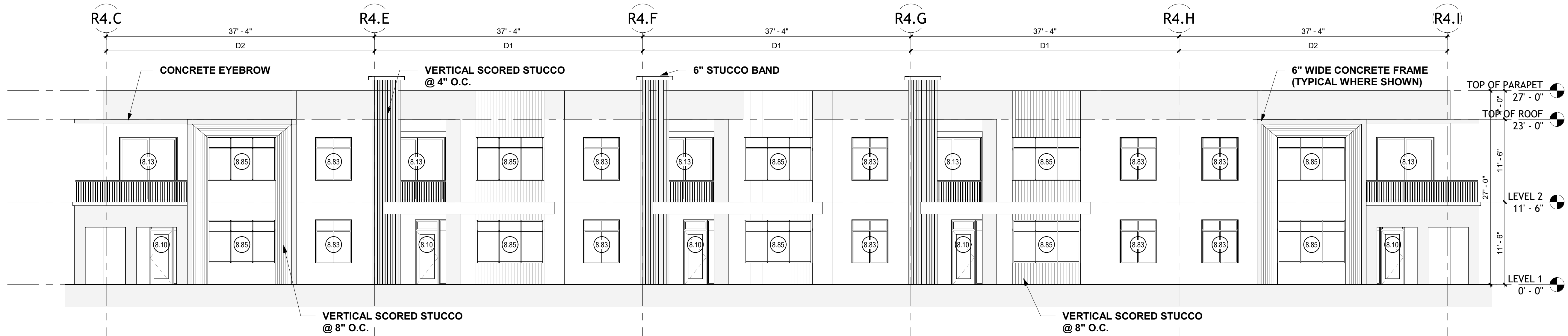
AAC SUBMITTAL - 2024.01.08

SHEET NAME

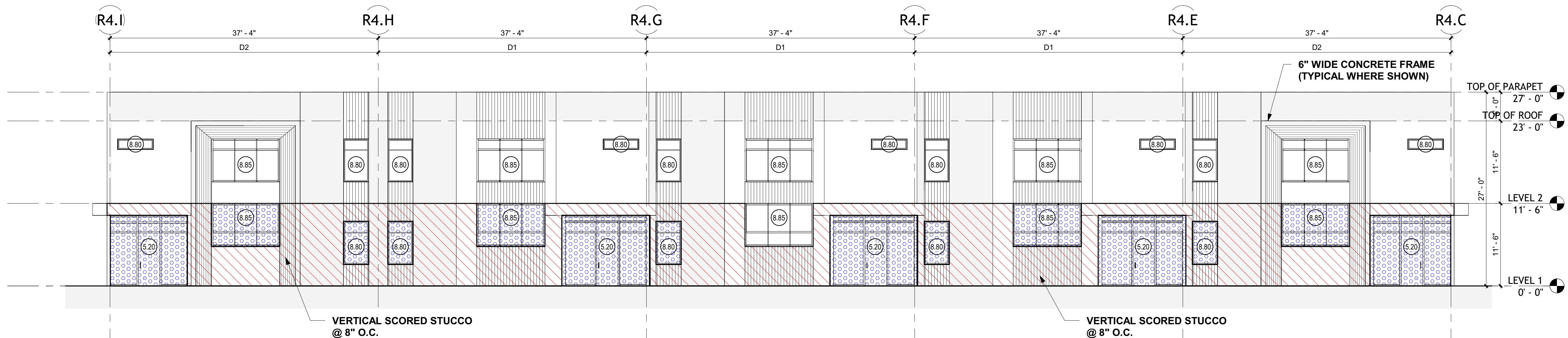
BUILDING TYPE IV ELEVATIONS

SHEET NO.

A.IV.4-102



1 BUILDING #8, #9 EAST FACADE



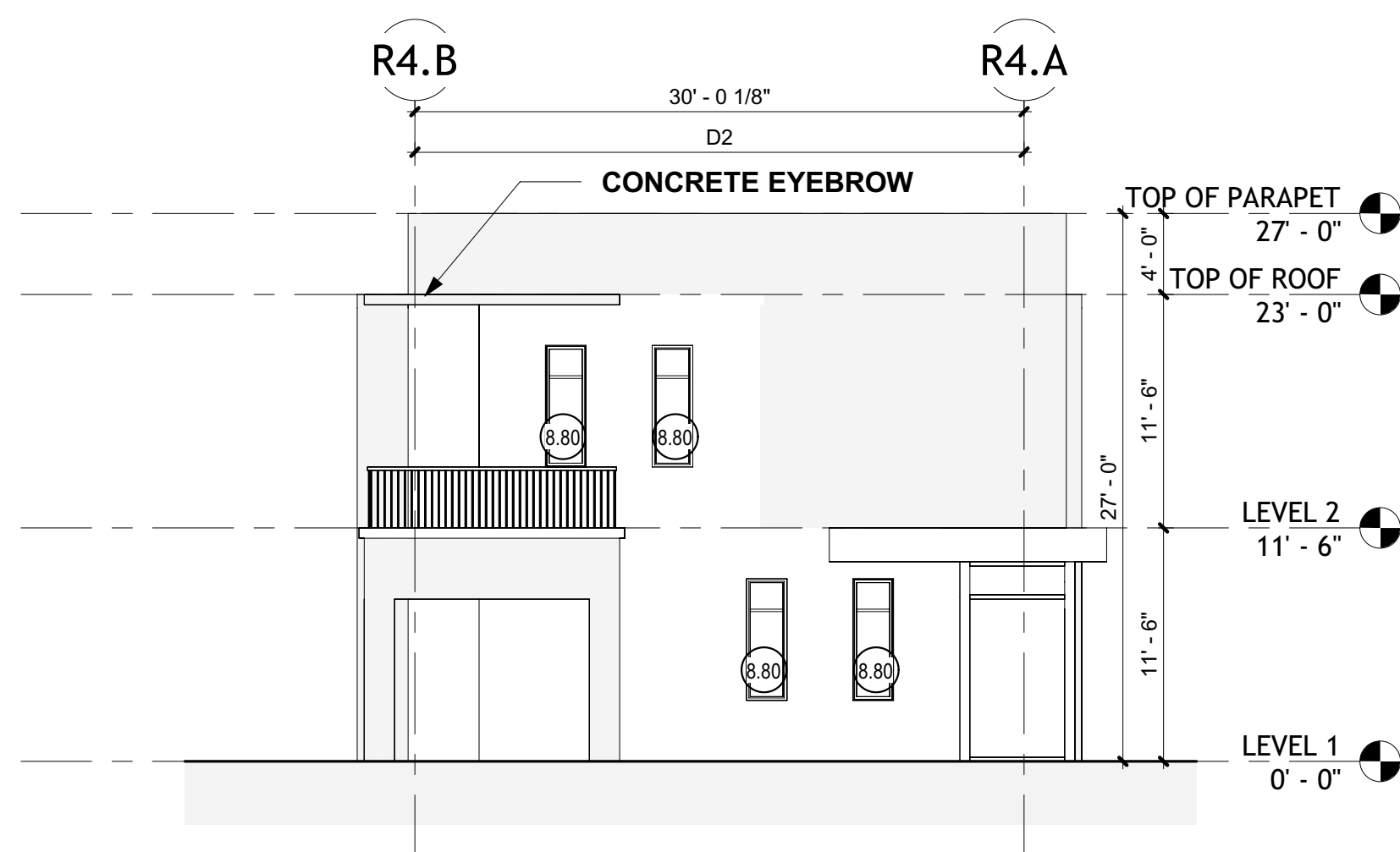
2 BUILDING #8, #9 WEST FACADE

FENESTRATION/TRANSPARENCY CALCULATION:

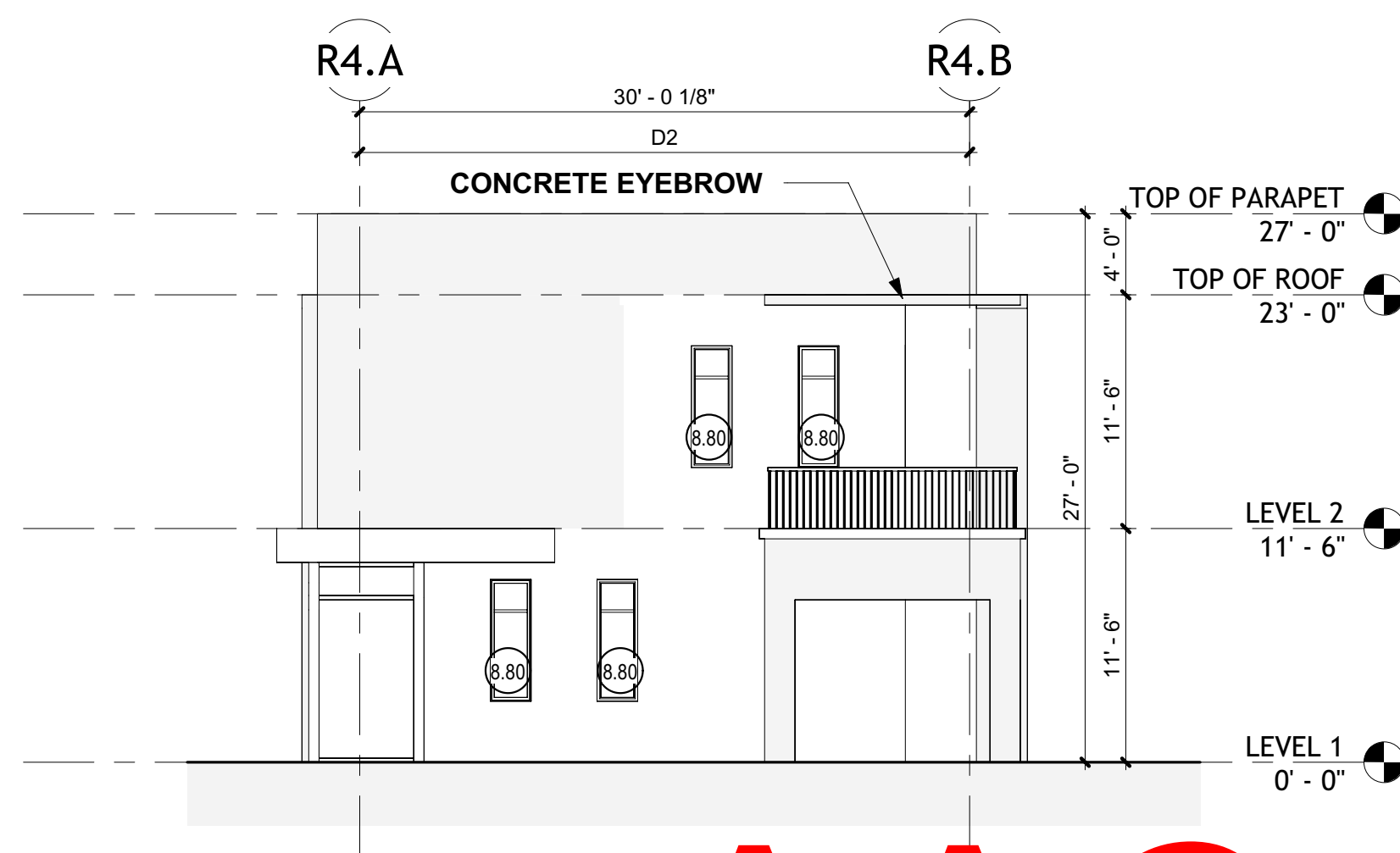
WALL AREA: 2,156 SF (100%)

FENESTRATION: 909 SF (42%)

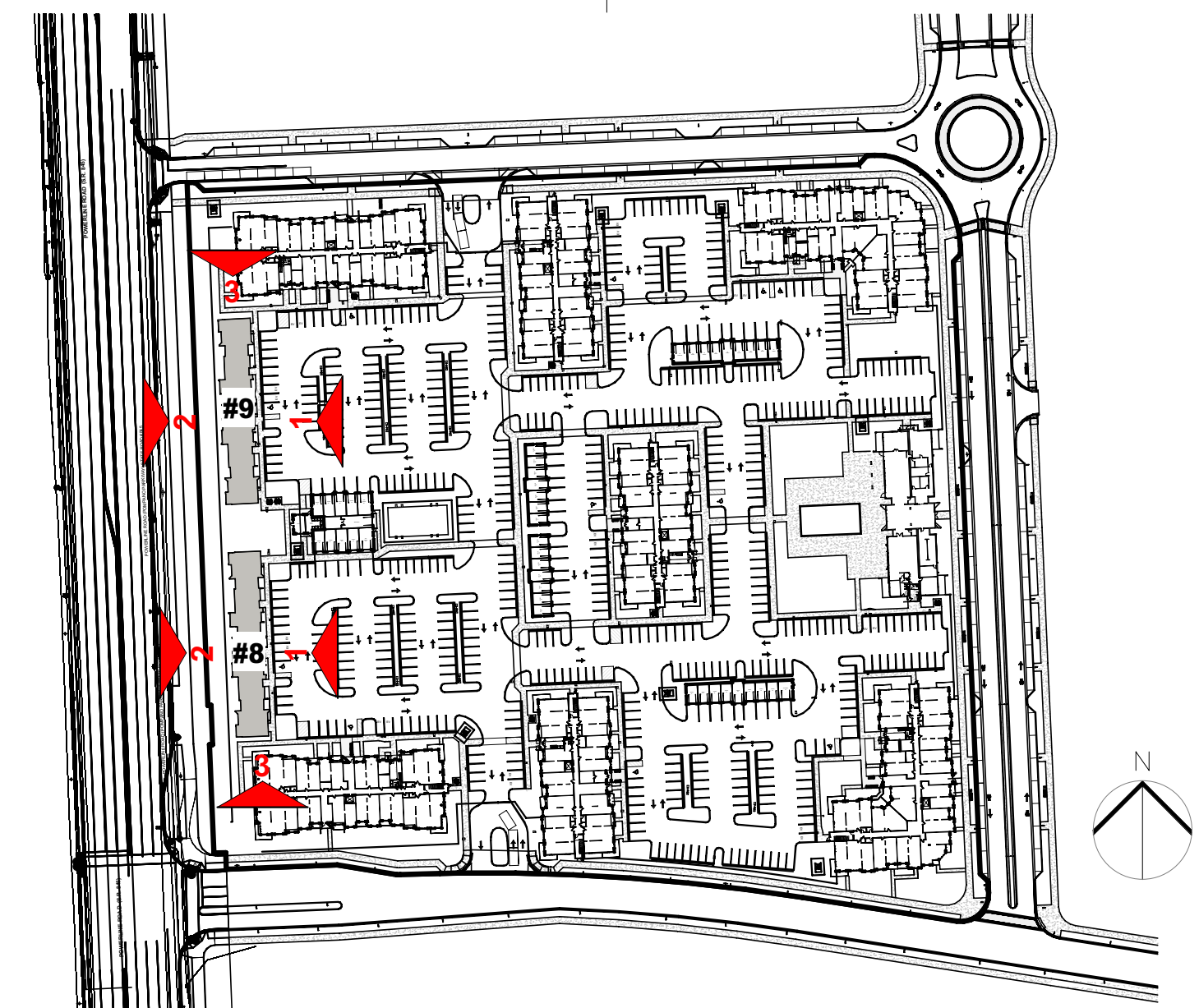
ELEVATION LEGEND	
ID	DESCRIPTION
5.20	ALUMINUM STOREFRONT SYSTEM
8.10	ALUMINUM / GLASS SWING DOOR (SUBMIT SHOP DRAWINGS)
8.13	ALUMINUM / GLASS SLIDING DOOR (GC TO SUBMIT SHOP DRAWINGS)
8.80	ALUMINUM / GLASS FIXED WINDOW (GC TO SUBMIT SHOP DRAWINGS)
8.83	ALUMINUM / GLASS SINGLE HUNG WINDOW WITH TRANSOM
8.85	ALUMINUM / GLASS SLIDING 3-PANEL WINDOW



4 BUILDING #8, #9 NORTH FAÇADE



3 BUILDING #8, #9 SOUTH FAÇADE



SITE PLAN BLDG #2, #5, #7